



SCHAEFER INTERNATIONAL GALLERY
EXHIBITS CALENDAR 2024

Image above: Chenta Laury: *Adaptive Frameworks*, 2023

January 23 – March 16

SENSE OF PLACE / PLACE OF SENSE

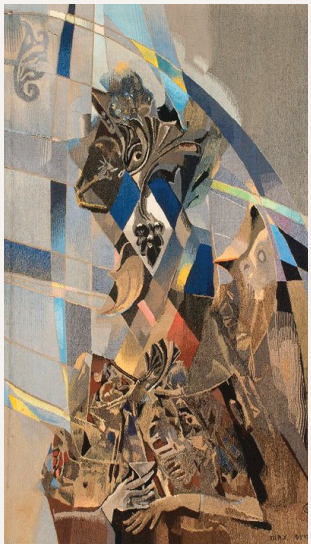
This exhibition explores the multi-faceted meaning of community at a critical moment of change for Maui, looking at who we are in this moment and who we seek to be in the future. Through partnerships with prominent community knowledge-bearers, Hawai'i-focused artists, and local schools, the gallery space transforms into numerous built environments that delve themes of history, water, land, spirituality, and people. The experiences offered throughout the exhibition tap into the potential for art to bring about awareness, conversation, and connection, with opportunities for visitors to add their own voice to the collective experience.



Brendan George Ko
On the Tow to Lahaina
photo print on paper



Sense of Place / Place of Sense exhibit installation



Max Ernst, Yvette Cauquil-Prince
Cocktail Drinker, 1975
hand-woven wool tapestry

April 9 – June 1

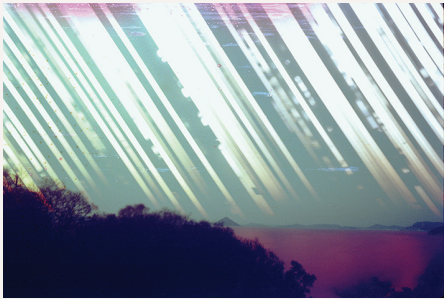
MAX ERNST
Surreal Mindscapes & Characters

German-born artist **Max Ernst** was a key figure in the movements of Dada and Surrealism that took place in Europe in early part of the 20th century. This exhibition highlights Ernst's role in the development of these movements through a selection of sculptures, prints, and a series of tapestries by **Yvette Cauquil-Prince**, who worked closely with the artist to translate his paintings into large-scale woven textiles.

June 15 – August 7

FOCUS

Japanese photographers **Yuji Hamada, Ken Kitano, Miki Nitadori, Yuki Onodera, Naruki Oshima, Risaku Suzuki, and Kazuyoshi Usui** go by the collective name of "**photography?end?**". Their respective avenues of work look at the potentiality of photography in a rapidly evolving digital age. While the production of images has become largely dematerialized in our current moment, the artists consider the materiality of photography and explore the relationship between conception, theme, and exhibition of work.



Ken Kitano
Gathering Light, Ogijima, Kagawa
film exposure from winter solstice 2017 to summer solstice 2018



Yuji Hamada
Primal Mountain, 2014
installation at Lake Léman for Festival Images 2014

August 27 – October 19

ALTERED EARTH

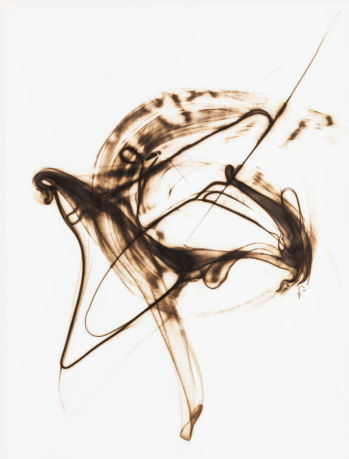


Rachelle Dang
Untitled ('Ulu), 2023
glazed ceramic
photo by Daniel Terna, courtesy Sameday NY

This invitational exhibition brings together 10 artists who specialize in ceramics and clay-related processes to exhibit new bodies and installations of work that showcase a range in selection of clays, firing processes, glazes, and utility. Participating artists are: **Clayton Amemiya, Jake Boggs, Jisoo Boggs, Rachelle Dang, Roberta Griffith, Codie M. King, David Kuraoka, Jenna Macy, Sarah Metz, Brad Evan Taylor.**

November 12 – December 28

PATHS OF INK



This exhibition highlights artists from the U.S., Japan, Korea, and Taiwan who are pursuing innovative new movements in calligraphy, amplifying age-old traditions into a contemporary dialogue. Ranging from traditional wall scrolls to explorations in dimensional installation, their work activates the inherent potential when brush and ink meet in symphony.

Etsuko Ichikawa
Trace 6914, 2014
glass pyrograph on paper

Gallery Hours:
Open Tuesday – Saturday, 10 am - 4 pm
Closed Sunday, Monday

Also open before select Castle Theater shows.

For information on exhibit-related public programs, visit our website mauiarts.org

