

SCHAEFER INTERNATIONAL GALLERY EXHIBITS CALENDAR 2022



Abstractionx3, Debra Drexler, 2021

January 11 – March 19 Schaefer Portrait Challenge 2022



This triennial statewide juried competition makes its much-anticipated return. The Challenge has been a signature exhibit of the Gallery since 2003, inviting Hawai'i's artists to take portraiture to new heights by exploring expressive and emotional depth in capturing the essence of their subjects. Their interpretations offer a range of approaches, thoughts, and techniques that tell the personal stories of our island communities. Two substantial cash awards recognize outstanding accomplishments – the Jurors' Choice Award and The Gene & Ruth Freedman People's Choice Award.

April 5 – June 18

O Kalani

O Kalani features the work of two Kānaka Maoli artists who have been active during a resurgence of Hawaiian culture, helping to define contemporary art of Hawai'i. Known for his large public works of art, **Sean K.L. Browne** portrays historic and legendary figures and uses Hawaiian iconography in contemporary ways. **Imaikalani Kalahele** uses an interdisciplinary approach, drawing on material from the past to current events creating art narratives.



Sean K.L. Browne
O Kalani (Of the Heavens), 2019
cast bronze, mahogany wood



Imaikalani Kalahele
Papa Iā'ua 'o Wakea, 2017
acrylic on canvas

July 5 – August 20 Paper Water Wind

This invitational exhibition brings together a dynamic group of artists who will explore the themes of water and wind through the medium of paper, deploying and altering its materiality with methods of printing, painting, folding, shredding, and stitching. New York artist **Wes Bruce** will return to build an immersive paper installation in the gallery and lead out a residency with community workshops. Participating artists are **Zenobia Lakdawalla, Erin McAdams, Janetta Napp, Deborah Nehmad, Koichi Yamamoto, and Keith Yurdana.**



Koichi Yamamoto
Rokkaku Kites
engraving print on washi

September 6 – October 22

Infinite Night, Photography by Stan Honda

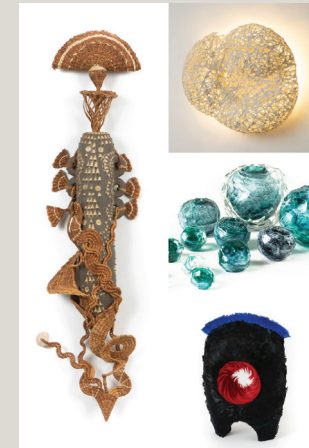


Stan Honda
Lava, Haleakalā, 2019
photography

The night sky landscapes of New York-based photojournalist **Stan Honda** show the beauty of the sky in relation to the Earth as it moves through the universe with a multitude of celestial objects. He has worked as an artist-in-residence at six national parks, including Haleakalā National Park on Maui. This exhibition will highlight his recent work of Haleakalā and other works from the night skies project.

November 8 – December 22

Hawai'i Craftsmen



In partnership with Hawai'i Craftsmen Organization, we will be traveling their Annual Statewide Juried Exhibition to Schaefer International Gallery to extend the exposure of the selected artists and their competence in traditional and contemporary craft. From its first edition in 1967, this exhibition has showcased innovation and expertise through works in ceramics, wood, textile, glass, metal, mixed media, and more, with numerous awards of recognition given to artists.

Selections from Hawai'i Craftsmen
Annual Statewide Exhibition 2021

Gallery Hours:
Open Tuesday – Saturday, 10 am - 4 pm
Closed Sunday, Monday

Also open before select Castle Theater and Yokouchi Pavilion shows.

Please check our website for possible date changes.
mauiarts.org



Maui
Arts &
Cultural
Center