

Schaefer International Gallery

Exhibition
Season
2017 - 2018



August 6 - October 1
Opening Reception August 5

Spineless: Portraits of Marine Invertebrates, The Backbone of Life



Susan Middleton
Pacific Giant Octopus, photograph, 2014

Acclaimed photographer Susan Middleton, who is well known for the exhibitions *Archipelago*, and *Remains of a Rainbow*, brings us a new body of work exploring the mysterious world of marine invertebrates: underwater animals without backbones. More than 98% of known species in the ocean are invertebrates, yet as the foundation for life in marine waters, they are relatively unknown. Her images capture the unexpected beauty and intimacy of this realm of life. With deep passion and investment in time and research, she reveals astonishing creatures that we may never get to see.

October 15 - December 23
Opening Reception October 14

He Makana: The Gertrude Mary Joan Damon Haig Collection of Hawaiian Art

He Makana, meaning "a gift," is a distinguished collection of paintings, prints, and traditional art forms of Hawai'i from the 1930s-1970s that capture the history and nostalgia of old Hawai'i. Among the treasures to be seen are paintings by three giants of early-20th century island painting: Lionel Walden, D. Howard Hitchcock, and Madge Tennent. This exhibition



D. Howard Hitchcock
Native Boy in Canoe, oil on canvas, 1896

was gifted to the state of Hawai'i, and is traveling to the Schaefer International Gallery from the Art in Public Places Collection, courtesy of Hawai'i State Foundation on Culture and the Arts.

2018

January 16 - March 18
Opening Reception January 14
Schaefer Portrait Challenge



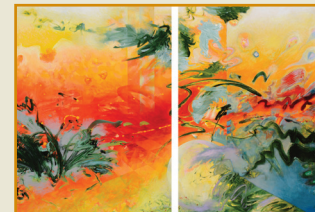
Schaefer Portrait Challenge 2015

This highly anticipated statewide juried exhibition has been held as a triennial since 2003, and continues to present the unique ethnic spectrum of Hawai'i's people, through the skills of artists and their explorations in portraiture. A broad range of interpretations and style are used to tell the unique stories of our island communities. Artists' accomplishments are acknowledged with two substantial cash awards through the Jurors Choice Award and the Marian Freeman People's Choice Award.

April 2 - 28
Opening Reception March 31

Art Maui 2018

We welcome back the Art Maui organization to present their 40th annual juried exhibit. This annual exhibition features talent from Maui's community of artists in a variety of media, including drawing, painting, printmaking, jewelry, fiber, photography, video, and sculpture.



Martha Woodbury
From One Incarnation to the Next, acrylic on canvas, 2017

Gallery Hours:
Open Tuesday – Sunday, 10 am - 5 pm
Closed on Mondays

Also open before Castle Theater shows
and during select intermissions.

www.mauiarts.org



May 14 - June 9
Opening Reception May 12
Young Creatives: Intergalactica

Our semi-annual student show features the work of Maui students K-12, from both private and public schools. Under the direction of their classroom teachers, students are asked to explore this year's "outer space" theme with imagination and brainstorming. High school students are invited to become part of a collaborative lab team working with artisan mentors to create an immersive intergalactic space station for the public to explore through S.T.E.A.M. educational learning in science, technology, engineering, art, and math.



Student work, Young Creatives 2016

June 23 - August 18
Opening Reception June 22

Ai Iwane: Island in My Mind, Fukushima



Ai Iwane, *litate, Fukushima*, 2016,
Seiichi and Takiko Shigihara at their former flower farm, pigment print

Two concurrent exhibits will feature personal approaches in photography by two women.

Ai Iwane from Tokyo, Japan, uses a Kodak Cirkut (large-format 360-degree rotating panoramic camera) to develop compelling images of the aftermath of the Fukushima disaster of 2011. Her work also reveals the historic connections between Fukushima and Maui through the traditions of the annual bon dance festivals.

Melissa Ann Pinney: Girl Transcendent



Melissa Ann Pinney
Kiara and Emma 2001, photograph

Melissa Ann Pinney is a fine art photographer based in Evanston, Illinois. Her works in this exhibition are selected from a long-term exploration of emerging feminine identity, informed by Pinney's own girlhood and that of her daughter, Emma. Vivid with color, gesture and light, the images suggest that the mysterious and ardent inner life of girls will withstand their inevitable maturation into adulthood.